

TECHNICAL DATA

Ti480 PRO, Ti450 PRO, Ti400 PRO and Ti300 PRO Infrared Cameras

The Fluke Professional Series



Fluke Connect® compatible

The Fluke PRO series cameras introduce a leading-edge visual infrared experience. These thermal imagers feature our smartest, most intuitive user interface and increased thermal sensitivity to capture the smallest differences. Equipped with the latest technology for on-screen clarity and lens compatibility to capture targets tiny-to-large, our best-selling cameras just got better.

- Increased sensitivity to visualize temperature differences, NETD for the Ti450 PRO is $\leq 0.025\text{ }^{\circ}\text{C}$ at $30\text{ }^{\circ}\text{C}$ target temp (25 mK)
- Easier to visualize and diagnose issues with sharper on-screen images, multiple rectangle markers and 9 color palettes
- More intuitive visual interface, improved, user-tested, touch screen interface
- More flexibility to visualize targets—tiny to large with interchangeable smart lenses—no calibration required, 2x and 4x telephoto, wide angle and macro lenses
- Capture a clear, accurate image focused throughout the field of view with MultiSharp™ Focus (Ti450 PRO and Ti480 PRO)
- Get an instant in-focus image of your designated target with LaserSharp® Auto Focus
- Get 4x the pixel data with SuperResolution, which captures multiple images and combines them to create up to 1280 x 960 images (Ti450 PRO and Ti480 PRO)
- Reduce the need to take notes in the field with IR-PhotoNotes™ and voice annotations
- Highlight areas that are outside your pre-set 'normal' temperature ranges quickly with color alarms
- Save time by wirelessly syncing images directly from your camera to the Fluke Connect® system, and attaching them to an asset record or work order

SUPERIOR IMAGE QUALITY

SPATIAL RESOLUTION

Ti480 PRO 0.93 mRad

Ti450 PRO 1.31 mRad

Ti400 PRO 1.31 mRad

Ti300 PRO 1.75 mRad

RESOLUTION

Ti480 PRO 640 x 480

SuperResolution mode: 1280 x 960

Ti450 PRO 320 x 240

SuperResolution mode: 640 x 480

Ti400 PRO 320 x 240

Ti300 PRO 240 x 180

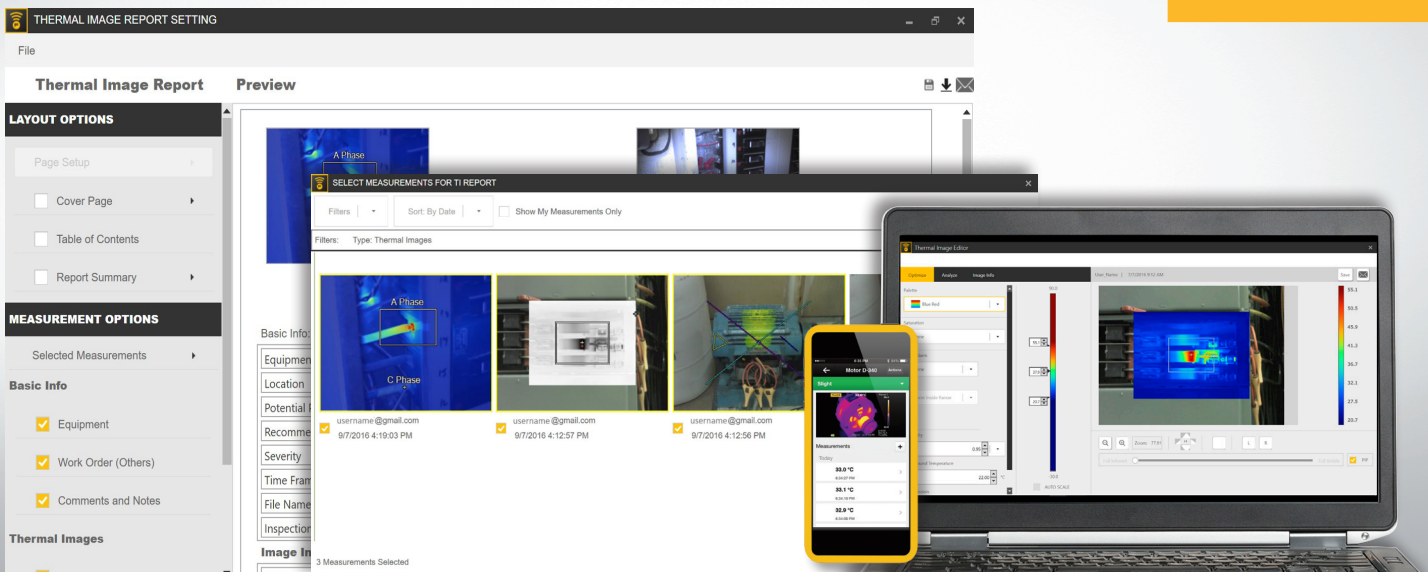
FIELD OF VIEW

Ti480 PRO 34 °H x 24 °V

Ti450 PRO 24 °H x 17 °V

Ti400 PRO 24 °H x 17 °V

Ti300 PRO 24 °H x 17 °V



Powerful, easy-to-use Fluke Connect®

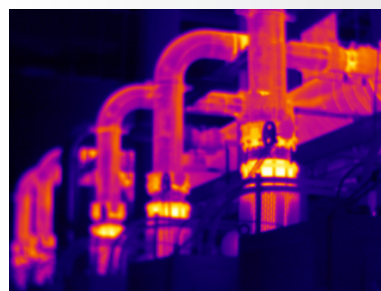
A comprehensive and connected software platform that represents the future of integrated equipment maintenance, monitoring, analysis and reporting. It's easier than ever to optimize thermal images, perform analytics, generate quick, customizable, robust reports, and export images to the format of your choice in the cloud. And you will be able to integrate with Fluke Connect—the largest integrated system of maintenance software and tools in the world.

- Modern visual design
- Intuitive navigation—easier to learn, easier and faster to work in
- Simplified work flows
- Simplified reporting workflow and better report templates
- Fluke Connect Cloud storage

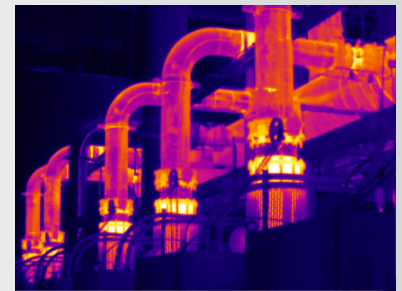
Download at flukeconnect.com

Fluke Connect and Fluke Connect cloud storage not available in all countries.

100 % Focused—Every object. Near and far. MultiSharp™ Focus.



Manual focus



MultiSharp Focus, available on the Ti450 PRO and Ti480 PRO

Detailed specifications

| | Ti480 PRO | Ti450 PRO | Ti400 PRO | Ti300 PRO |
|--|--|---|---------------------------------------|----------------------|
| Key features | | | | |
| Detector resolution | 640 x 480 or 1280 x 960 with SuperResolution | 320 x 240 or 640 x 480 with SuperResolution | 320 x 240 | 240 x 180 |
| SuperResolution | Yes, in software. Captures and combines 4x the data to create a 1280 x 960 image | Yes, in software. Captures and combines 4x the data to create a 640 x 480 image | - | |
| Infrared Resolution | 307,200 pixels | 76,800 pixels | | 43,200 pixels |
| IFOV with standard lens (spatial resolution) | 0.93 mRad, D:S 1065:1 | 1.31 mRad, D:S 753:1 | | 1.75 mRad, D:S 565:1 |
| Field of view | 34 °H x 24 °V | 24 °H x 17 °V | | |
| Minimum focus distance | 15 cm (approx. 6 in) | | | |
| MultiSharp™ Focus | Yes, focused near and far, throughout the field of view | | - | |
| LaserSharp® Auto Focus | Yes, for consistently in-focus images. Every. Single. Time. | | | |
| Laser distance meter | Yes, calculates distance to the target for precisely focused images and displays distance on screen | | | |
| Advanced manual focus | Yes | | | |
| Wireless connectivity | Yes, to PC, iPhone® and iPad® (iOS 4s and later), Android™ 4.3 and up, and WiFi to LAN (where available) | | | |
| Fluke Connect® app compatible | Yes*, connect your camera to your smartphone, and images taken automatically upload to the Fluke Connect app for saving and sharing | | | |
| Fluke Connect® Assets optional software | Yes*, assign images to assets, create work orders, and easily compare measurement types in one location | | | |
| Fluke Connect® Instant Upload | Yes*, connect your camera to your building's WiFi network, and images taken automatically upload to the Fluke Connect system for viewing on your smartphone or PC | | | |
| Fluke Connect® tool compatible | Yes*, five modes of image blending (AutoBlend™ mode, Picture-in-Picture (PIP), IR/Visible alarm, Full IR, Full visible light) add the context of the visible details to your infrared image | | | |
| IR-Fusion® technology | Yes, adds the context of the visible details to your infrared image | | | |
| Ruggedized touchscreen display | 3.5 inch (landscape), 640 x 480 LCD | | | |
| Rugged, ergonomic design for one-handed use | Yes | | | |
| Thermal sensitivity (NETD)** | ≤ 0.05 °C at 30 °C target temp (50 mK) | ≤ 0.025 °C at 30 °C target temp (25 mK) | ≤ 0.04 °C @ 30 °C target temp (40 mK) | |
| Level and span | Smooth auto and manual scaling | | | |
| Fast auto toggle between manual and auto modes | Yes | | | |
| Fast auto-rescale in manual mode | Yes | | | |
| Minimum span (in manual mode) | 2.0 °C (3.6 °F) | | | |
| Minimum span (in auto mode) | 3.0 °C (5.4 °F) | | | |
| Built-in digital camera (visible light) | 5MP | | | |
| Frame rate | 60 Hz or 9 Hz versions | | | |
| Laser pointer | Yes | | | |
| LED light (torch) | Yes | | | |
| Digital zoom | 2x and 4x | | - | |
| Data storage and image capture | | | | |
| Extensive memory options | Removable 4 GB micro SD memory card, 4 GB internal flash memory, save to USB flash drive capability, upload for permanent storage | | | |
| Image capture, review, save mechanism | One-handed image capture, review, and save capability | | | |
| Image file formats | Non-radiometric (.bmp) or (.jpeg) or fully-radiometric (.is2); no analysis software required for non-radiometric (.bmp, .jpg and .avi) files | | | |
| Memory review | Thumbnail and full screen review | | | |
| Software | SmartView® software—full analysis and reporting software with access to the Fluke Connect system | | | |
| Export file formats with Fluke Connect® desktop software | Bitmap (.bmp), GIF, JPEG, PNG, TIFF | | | |
| Voice annotation | 60 seconds maximum recording time per image; reviewable playback on camera, optional bluetooth headset available but not required | | | |
| IR-PhotoNotes™ | Yes (5 images) | | | |
| Text annotation | Yes | | | |
| Video recording | Standard and radiometric | | | |
| File formats video | Non-radiometric (MPEG - encoded .AVI) and fully-radiometric (.IS3) | | | |
| Remote display viewing | Yes, see the live stream of the camera display on your PC, smartphone, or TV monitor. Via USB, WiFi hotspot, or WiFi network to SmartView® software on a PC; via WiFi hotspot to the Fluke Connect® app on a smartphone; or via HDMI to a TV monitor | | | |
| Remote control operation | Yes, through SmartView® software or Fluke Connect mobile app | | | - |
| Auto capture (temperature and interval) | Yes | | | |

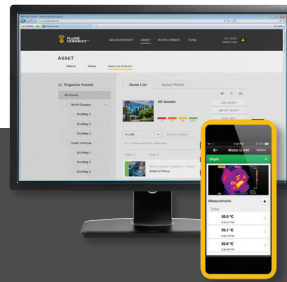
*Fluke Connect analysis and reporting software is available in all countries but Fluke Connect is not. Please check availability with your authorized Fluke distributor.

** Best possible

Detailed specifications

| | Ti480 PRO | Ti450 PRO | Ti400 PRO | Ti300 PRO |
|---|---|--|---------------------------------------|-----------|
| Battery | | | | |
| Batteries (field-replaceable, rechargeable) | Two lithium ion smart battery packs with five-segment LED display to show charge level | | | |
| Battery life | 2-3 hours per battery (actual life varies depending on settings and usage) | 3-4 hours per battery (actual life varies depending on settings and usage) | | |
| Battery charge time | 2.5 hours to full charge | | | |
| Battery charging system | Two-bay battery charger or in-imager charging. Optional 12 V automotive charging adapter | | | |
| AC operation | AC operation with included power supply (100 V AC to 240 V AC, 50/60 Hz) | | | |
| Power saving | User selectable sleep and power off modes | | | |
| Temperature measurement | | | | |
| Temperature measurement range (not calibrated below -10 °C) | ≤ -10 °C to +1000 °C (-14 °F to 1832 °F) | -20 °C to +1200 °C (-4 °F to +2192 °F) | -20 °C to +650 °C (-4 °F to +1202 °F) | |
| Accuracy | ± 2 °C or 2 % (at 25 °C nominal, whichever is greater) | | | |
| On-screen emissivity correction | Yes (both value and table) | | | |
| On-screen reflected background temperature compensation | Yes | | | |
| On-screen transmission correction | Yes | | | |
| Live line marker | Yes | | | |
| Color palettes | | | | |
| Standard palettes | 9: Rainbow, Ironbow, Blue-Red, High Contrast, Amber, Amber Inverted, Hot Metal, Grayscale, Grayscale Inverted | | | |
| Ultra Contrast™ palettes | 9: Rainbow, Ironbow, Blue-Red, High Contrast, Amber, Amber Inverted, Hot Metal, Grayscale, Grayscale Inverted | | | |
| Lens compatibility | | | | |
| Macro-25 micron lens: 25 MAC2 | Yes | | | |
| 2 x telephoto lens: TELE 2 | Yes | | | |
| 4 x telephoto lens: TELE4 | Yes | | | |
| Wide angle lens: WIDE 2 | Yes | | | |
| General specifications | | | | |
| Color alarms (temperature alarms) | High temperature, low temperature, and isotherms (within range) | | | |
| Infrared spectral band | 7.5 μm to 14 μm (long wave) | | | |
| Operating temperature | -10 °C to +50 °C (14 °F to 122 °F) | | | |
| Storage temperature | -20 °C to +50 °C (-4 °F to 122 °F) without batteries | | | |
| Relative humidity | 10 % to 95 % non-condensing | | | |
| Center-point temperature measurement | Yes | | | |
| Spot temperature | Hot and cold spot markers | | | |
| User-definable spot markers | 3 user-definable spot markers | | | |
| Center box | Up to 3 expandable-contractible measurement box with MIN-MAX-AVG temp display | | | |
| Safety | IEC 61010-1: Overvoltage category II, Pollution Degree 2 | | | |
| Electromagnetic compatibility | IEC 61326-1: Basic EM environment. CISPR 11: Group 1, Class A | | | |
| Australian RCM | IEC 61326-1 | | | |
| US FCC | CFR 47, Part 15 Subpart C Sections 15.207, 15.209, 15.249 | | | |
| Vibration | 0.03 g2/Hz (3.8 g), 2.5 g IEC 68-2-6 | | | |
| Shock | 25 g, IEC 68-2-29 | | | |
| Drop | Engineered to withstand 2 meter (6.5 feet) drop with standard lens | | | |
| Size (H x W x L) | 27.7 cm x 12.2 cm x 16.7 cm (10.9 in x 4.8 in x 6.5 in) | | | |
| Weight (battery included) | 1.04 kg (2.3 lb) | | | |
| Enclosure rating | IEC 60529: IP54 (protected against dust, limited ingress; protection against water spray from all directions) | | | |
| Warranty | Two-years (standard), extended warranties are available | | | |
| Recommended calibration cycle | Two-years (assumes normal operation and normal aging) | | | |
| Supported languages | Czech, Dutch, English, Finnish, French, German, Hungarian, Italian, Japanese, Korean, Polish, Portuguese, Russian, Simplified Chinese, Spanish, Swedish, Traditional Chinese, and Turkish | | | |
| RoHS compliant | Yes | | | |





Ordering information

FLK-Ti480 PRO 60 Hz Infrared Camera
 FLK-Ti480 PRO 9 Hz Infrared Camera
 FLK-Ti450 PRO 60 Hz Infrared Camera
 FLK-Ti450 PRO 9 Hz Infrared Camera
 FLK-Ti400 PRO 60 Hz Infrared Camera
 FLK-Ti400 PRO 9 Hz Infrared Camera
 FLK-Ti300 PRO 60 Hz Infrared Camera
 FLK-Ti300 PRO 9 Hz Infrared Camera

Included

Infrared camera with standard infrared lens; AC power supply and battery pack charger (including universal AC adapters); two rugged lithium ion smart battery packs; USB cable; HDMI video cable; 4 GB micro SD card; rugged, hard carrying case; soft transport bag and adjustable hand strap. **Available by free download:** SmartView® desktop software and user manual.

Optional accessories

FLK-LENS/TELE2 Infrared Telephoto Lens (2X magnification)
 FLK-LENS/4XTELE2 Infrared Telephoto Lens (4X magnification)
 FLK-LENS/WIDE2 Infrared Wide Angle Lens
 FLK-LENS/MACRO2 Infrared Macro Lens (close-up 0.5 times)
 TI-CAR-CHARGER Car Charger
 FLK-TI-VISOR3 Sun Visor
 BOOK-ITP Introduction to Thermography Principles Book
 TI-TRIPOD3 Tripod Mounting Accessory
 FLK-TI-BLUETOOTH Bluetooth headset
 FLK-TI-SBP3 Additional Smart Battery
 FLK-TI-SBC3B Additional Smart Battery Charger
Visit www.fluke.com to get complete details on these products or ask your local Fluke sales representative.

The Expert Series

Go expert with the Fluke TiX580, TiX560, TiX520 or TiX500, and get up to 640 x 480 resolution along with maximum flexibility of a screen that rotates a full 240 degrees and a 5.7 inch touchscreen LCD. Includes in-field analysis and post-capture image processing on camera, along with other expert-level features and more lens options.



Preventive maintenance simplified. Rework eliminated.

Save time and improve the reliability of your maintenance data by wirelessly syncing measurements using the Fluke Connect® system.

- Eliminate data-entry errors by saving measurements directly from the tool and associating them with the work order, report or asset record.
- Maximize uptime and make confident maintenance decisions with data you can trust and trace.
- Move away from clipboards, notebooks and multiple spreadsheets with a wireless one-step measurement transfer.
- Access baseline, historical and current measurements by asset.
- Share your measurement data using ShareLive™ video calls and emails.
- The PRO series infrared cameras are part of a growing system of connected test tools and equipment maintenance software. Visit the website to learn more about the Fluke Connect® system.

Find out more at flukeconnect.com



All trademarks are the property of their respective owners. WiFi or cellular service required to share data. Smartphone, wireless service and data plan not included with purchase. First 5 GB of storage is free. Phone support details can be viewed at fluke.com/phones.

Smart phone wireless service and data plan not included with purchase. Fluke Connect is not available in all countries.

Fluke. *Keeping your world up and running.*®

Fluke Corporation
 PO Box 9090, Everett, WA 98206 U.S.A.
Fluke Europe B.V.
 PO Box 1186, 5602 BD
 Eindhoven, The Netherlands

Modification of this document is not permitted without written permission from Fluke Corporation.

For more information call:
 In the U.S.A. (800) 443-5853 or
 Fax (425) 446-5116
 In Europe/M-East/Africa +31 (0)40 267 5100 or
 Fax +31 (0)40 267 5222
 In Canada (800)-36-FLUKE or
 Fax (905) 890-6866
 From other countries +1 (425) 446-5500 or
 Fax +1 (425) 446-5116
 Web access: <http://www.fluke.com>

©2018 Fluke Corporation.
 Specifications subject to change without notice.
 4/2018 6010115e-en